

# Fiery® S300, S500, Q4500

## Demo: Fiery Driver 2.0 About Tab, Mixed Media v1.2, Job Monitor, Printed Jobs, and Printer Status

### Feature Overview

Fiery Driver 2.0 supports Window XP, 2000, NT, and ME operating systems. The new features are supported only by servers that ship with the latest version of the driver. For earlier servers that do not support the new features, they remain hidden and disabled.

Mixed Media v1.2, Booklet Maker, and FreeForm Preview are utilities that rely on Fiery Driver 2.0 and Command WorkStation 4.1 for full functionality. In addition, Fiery Driver 2.0 includes the About Tab, Pop-Up Menus, “Draggable” Watermarks, Job Monitor, Printer Status Tab, and User Interface Shortcuts.

The About Tab displays useful information regarding the driver version and the Fiery server by using bi-directional communication between the printer driver and the Fiery server. With Mixed Media v1.2, the user can specify different finishing options for specific chapters, or sections, of a document. The Job Monitor provides the user with current status of print jobs sent to the Fiery while the Printer Status tab provides information about position in the Active Jobs queue, error conditions, and consumables.

### Objective

This demo script explains how to access information in the About Tab; how to utilize the Mixed Media v1.2 feature to print a document on various types of media; how to monitor the document in the Active Jobs queue on the Fiery using the Job Monitor; and how to verify printing progress and consumables levels with the Printer Status tab.

### Materials and Equipment

- Fiery Command WorkStation 4.1
- Adobe Acrobat 4.0 or later
- Fiery S300, S500, or Q4500 connected to a production print engine with capabilities for printing on various weights of paper from designated trays and providing duplex printing capability
- 10 page PDF File: Brochure\_NoVellum\_Sample.pdf
- Coated 100lb white cover stock, 11”x17”- for cover
- Coated 100lb white text stock, 11”x17”- for inside pages

### Accessing the About Tab in Fiery Driver 2.0

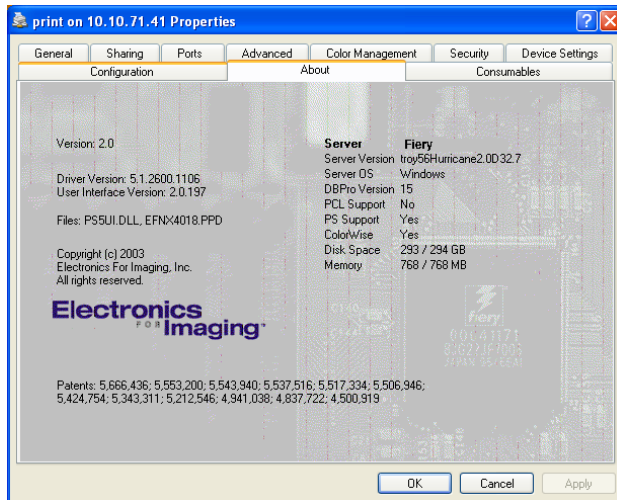
Using bidirectional communication, the About tab displays useful information about the driver version and the Fiery server. Fiery Driver can receive or retrieve the list of features supported by the Fiery server. The list of features is then displayed in the About tab as shown on the next page. Bidirectional communication occurs automatically in the background and does not interrupt the user’s workflow.

Information displayed including the list of features supported by the Fiery server is as follows:

Printer engine model, server model, hardware specs (CPU, memory, hard disk size), page description languages, DocBuilder Pro version, and ColorWise version.

Whenever applicable, the appropriate version of the software, code base, and/or user interface for the different components is also displayed in the About tab.

### Step 1



Information displayed including the list of features supported by the Fiery server is as follows:

Printer engine model, server model, hardware specs (CPU, memory, hard disk size), page description languages, DocBuilder Pro version, and ColorWise version.

Whenever applicable, the appropriate version of the software, code base, and/or user interface for the different components is shown as well.

## Preparation for printing with Mixed Media v1.2

- Launch installed Fiery® Command WorkStation 4.1 application. Go to **Start>Programs>Fiery>Command WorkStation 4.1** Log in to Fiery server.
- Open **Brochure\_NoVellum\_Sample.pdf** in Adobe Acrobat and send to Active Jobs queue of the Fiery server. In Acrobat, go to **File>Print>select Fiery Q4500/hold\*** in the printer menu> **click OK**.
- On the **Command WorkStation**, confirm that the file is sent to the **Active Jobs** queue.

*\* Note: S300, S500, Q4500 server/printer names will vary according to location.*

## Paper loading and Tray settings

1. Load specified media into paper tray. (Load at least 100 sheets in each paper tray. If you are loading special paper with less than 100 sheets, fill tray with regular paper and then place special paper on top.)
  - Load one tray with white text paper, short edge along the side of the tray (Short Edge Feed), and set tray settings as **Standard, 106-135 gsm, Coated**.
  - Load second tray with white cover paper, short edge along the side of the tray, and set tray settings as **Standard, 151-220 gsm, Coated**.
  - Make sure the paper fits securely in both trays by adjusting the paper guides.
2. Check paper catalog information on the LCD of the engine to make sure all trays are defined correctly.

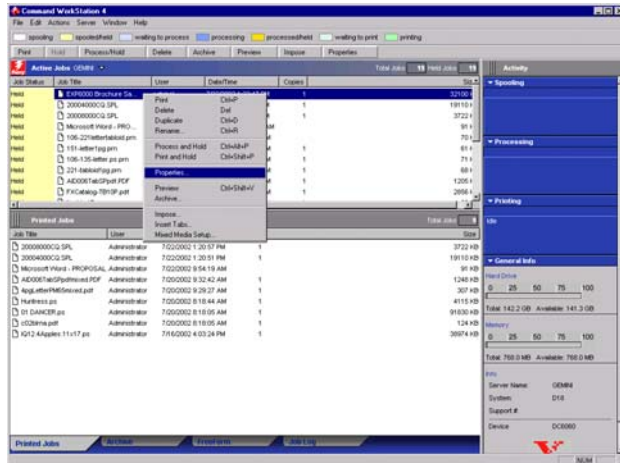


## Procedures for printing with Mixed Media v1.2

The Mixed Media v1.2 feature is a convenient method for creating mixed page jobs in a single production workflow that may include heavier stock for the wrap around front and back covers of a manual while using a lighter more flexible paper for the interior pages.

### Part 1 – Define Job Properties

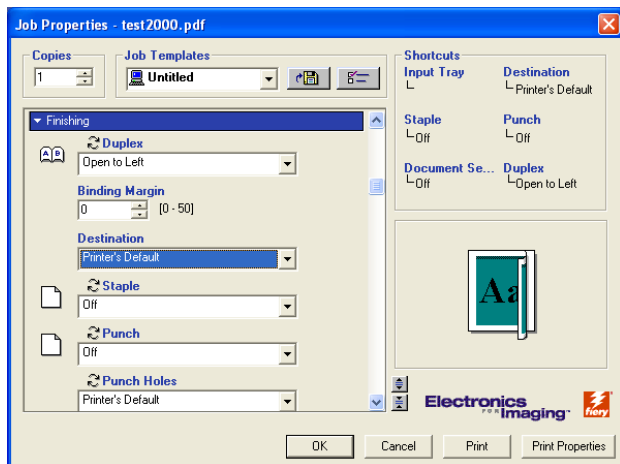
#### Step 1



Within EFI Command WorkStation,

1. Select **Brochure\_NoVellum\_Sample.pdf** from the Active Jobs queue, *right click* your mouse, and **select Properties** from the drop down menu that appears.

#### Step 2



### Defining Job Properties

Select or enter the following information:

- **Jobs:** "1"
- **Page Size:** 11"x17"
- **Duplex:** Open to Left
- Use default settings for remaining PPDs.
- Click **OK** to close Properties box.

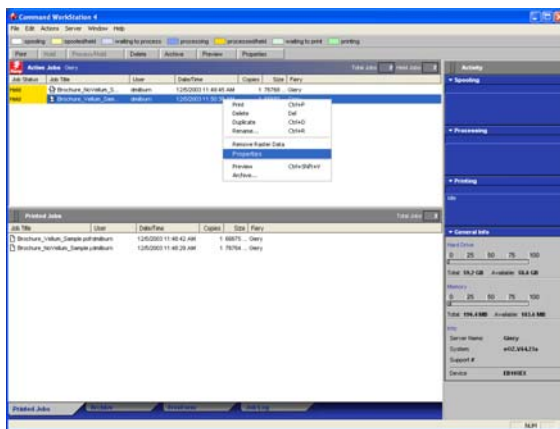
Note: This job is printed on 5 sheets of 11" x 17" inch paper that when duplexed become 10 printed pages. To create a booklet, fold each of the 10 pages along the center gutter and saddlestitch them together to make a 20-page document including front and back covers.

Finishing options, such as stapling and booklet making are engine dependent. Don't forget to apply applicable finishing features to your job.

## Part 2 – Mixed Media v1.2 Setup

- **Chapter Start:** Designates chapter starts on specific pages, allowing you to apply finishing options to each chapter. (Please refer to the Tabs and Chapters demo for further information on this feature.) Enter page numbers as comma-separated values (for example: 4,9,17) to designate the start of each new chapter. It is not necessary to enter the first page; page numbers refer to the number of the original document.
- **Define each chapter as a separate finishing set:** Applies finishing features that are defined in the job properties for each subset (chapter groups). (Please, refer to the Tabs and Chapters demo for this feature.)
- **Page Range:** Defines the range of pages where specific media will be used. Pages and page ranges may be entered in the Page Range field as comma-separated or hyphenated values (for example: 3, 9-14, 18).
- **Duplex: Head to Head** The upper sheet is rotated 180 degrees so that the top is aligned against the top edge of a second page directly below it; **Head to Toe** The upper sheet is not rotated which results in the bottom edge of the sheet being aligned with the top edge of the sheet below it.
- **Media Type:** Defines the weight of the media that is assigned to specific page ranges. These weights are further explained in the paper catalog.
- **Paper Source:** Designates the paper tray from which a specific media type will be pulled.

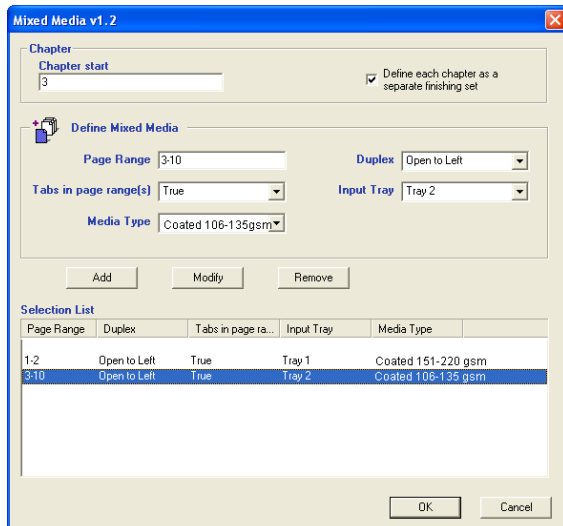
### Step 1



On the Command WorkStation,

1. Select **Brochure\_NoVellum\_Sample.pdf** file, right click with your mouse, and select **Mixed Media Setup** from the roll down menu.

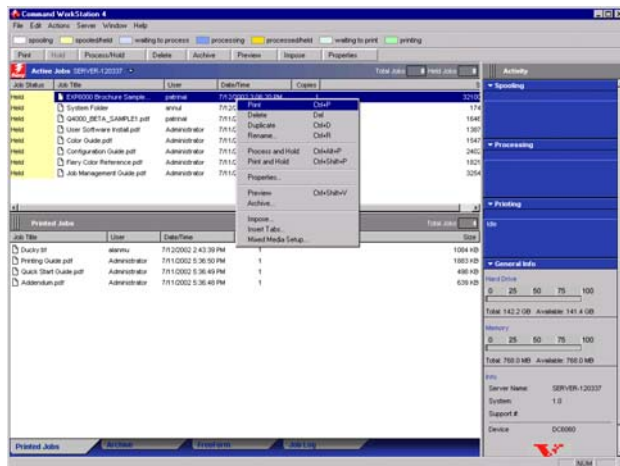
## Step 2



2. Enter the pages “1-2” in the **Page Range** field and select “**Coated 151-220gsm**” from the **Media Type** drop box, and click **Add** to move it to the **Selection List**.
3. Enter the pages “3-10” in the **Page Range** field and select “**Coated 106-135gsm**” from the **Body Paper Type** drop box, and click **Add** to move it to the **Selection List**.
4. Click **OK** to close the Mixed Media Dialog box.

## Part 3 – Print your Mixed Media Job

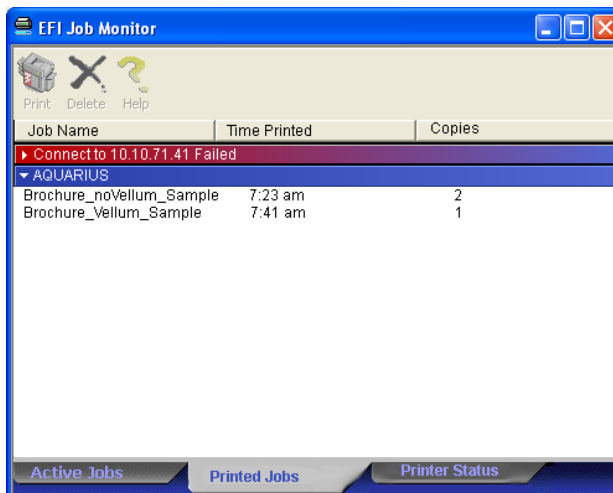
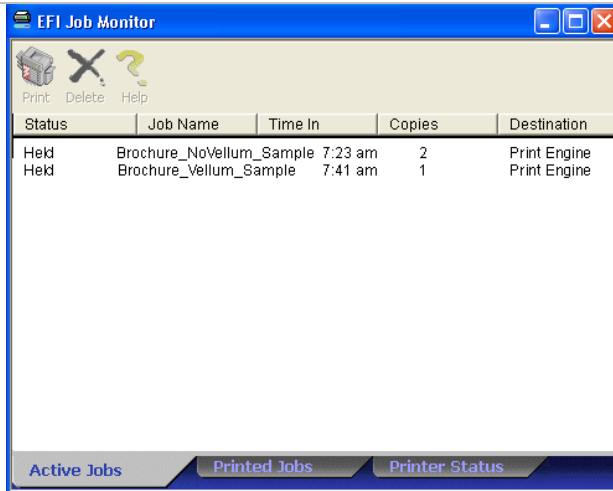
### Step 1



1. Within the Active Jobs queue in Command WorkStation, Select the job, right click with your mouse, and select **Print** to send the Brochure\_No\_Vellum\_Sample.pdf job to the print engine.
2. Retrieve the five duplexed 11x17 inch sheets from the copier and fold them in half across the 11-inch width so that one 8.5x11-inch page is created on each side of the gutter.

## Job Monitor and Printer Status Procedures

### Step 2



### Procedures for using the Job Monitor

The Job Monitor is designed to give the user a current status on print jobs sent to an EFI driven device. Each print job sent by the user is tracked by the Job Monitor. It alerts the user to any error reported by the Fiery that would prevent printing of the job.

An unlimited number of Fiery servers can be tracked by the Job Monitor (assuming they support the feature). However, only one Job Monitor will be displayed to track a user's print jobs regardless of how many jobs were sent to multiple servers for printing.

The functions of the Job Monitor can be categorized as follows:

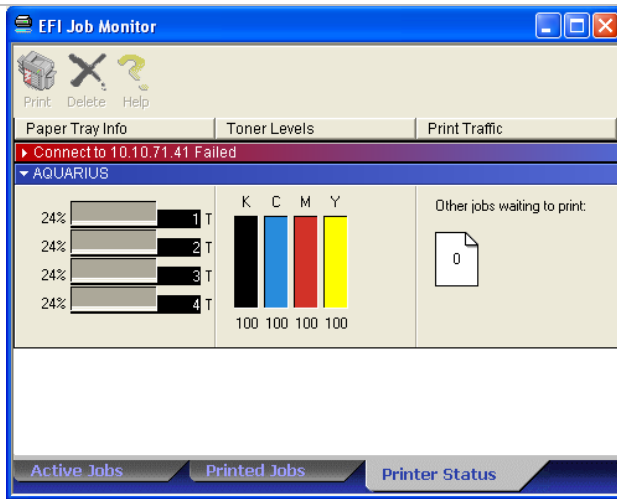
- Whether an error condition exists on the Fiery or the connected print engine.
- How many jobs need to print before the user's job will print.
- In what processing stage is the job currently (spooling, processing, or printing).
- When the job was printed by the Fiery driven device.

Note: The Job Monitor cannot track print jobs sent via IPP, Point and Print, or E-mail Port Monitor or any future port monitor of similar type where the job is sent to an intermediate server.

**Printed Jobs Tab:** The Printed Jobs tab functions as a job log of the user's print jobs as they are spooled, processed, and printed. The read-only window displays the following information:

- Jobs that have been printed
- Jobs that were canceled
- Job name, time printed, number of copies of the job





The columns in the Printed Jobs window are fixed and the user cannot add to or delete from them. However, the window and columns are resizable by clicking and dragging from the lower right corner.

**The Printer Status tab** provides the user with the following server information:

- Whether an error condition exists on the Fiery or the print engine
- How many jobs need to print before the user's job will print
- The level of consumables available on the print engine (paper and/or toner)

The depth of information displayed may vary from engine to engine. Generally, if the information is available, the Job Monitor will display it in the Printer Status tab. This tab is not accessible or active on Velocity servers.